

# TD Molecular Biology and Genetic Engineering

Université Mohamed Khider -Biskra-

Faculté des Sciences SNVSTU

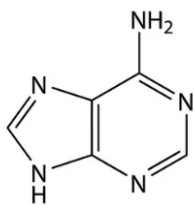
Licence Microbiologie

Chargé de Cour : Dr.Charifi Samia

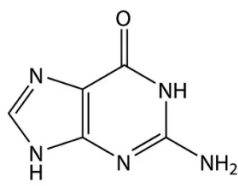
Année Universitaire : 2025-2026

Exercise :

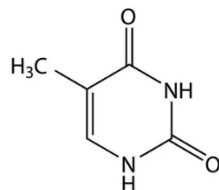
1. Among the structures shown below, which one corresponds to adenine?
2. In the following list, which are purines and which are pyrimidines?



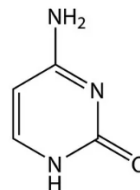
(a)



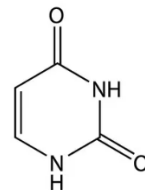
(b)



(c)

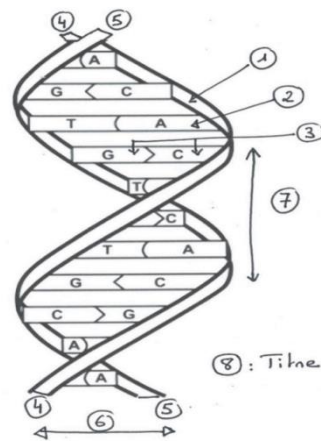


(d)

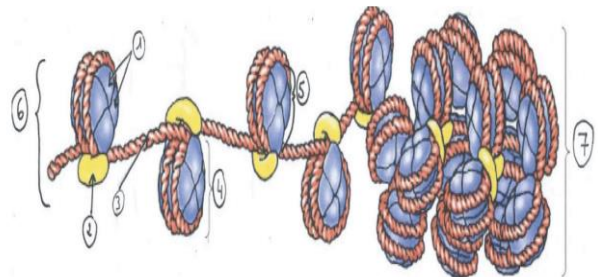
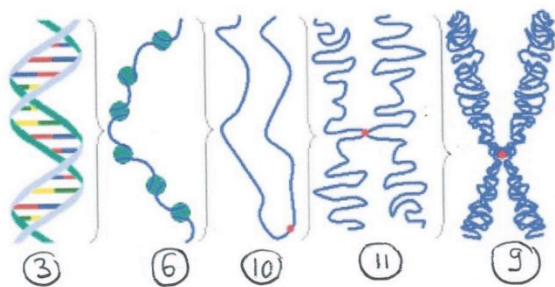


(e)

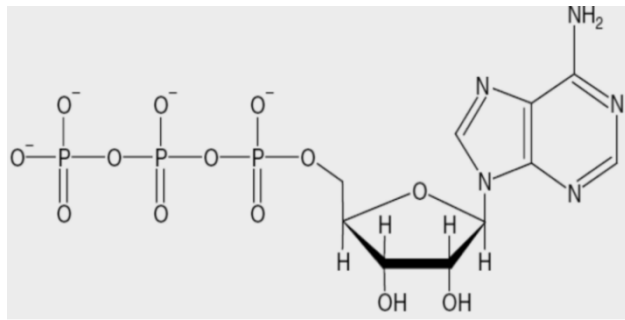
3. What are all nucleotides, the monomers of nucleic acids, composed of ?
4. Which pentose is found in DNA??
5. Which pentose is found in RNA??
6. Label the following figure:



7. Label the following figure:

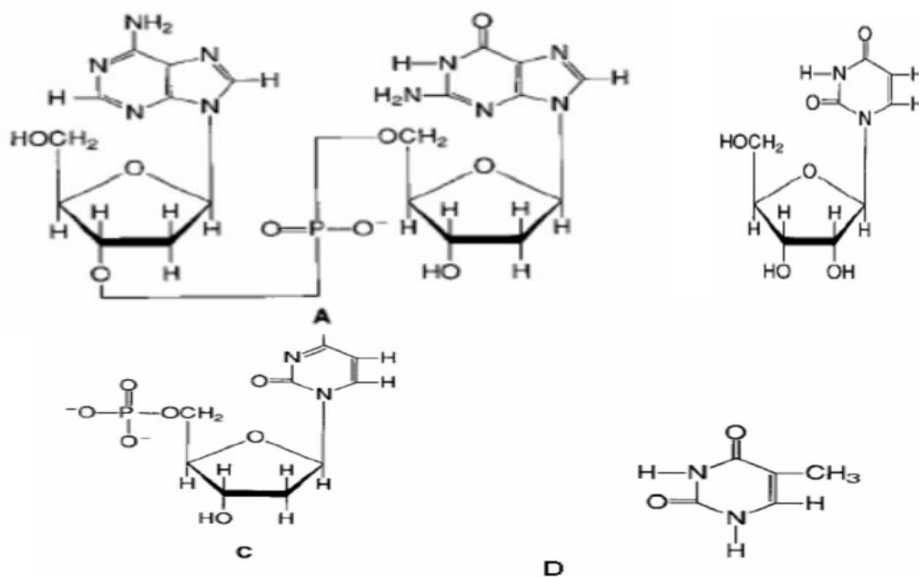


8. Among the statements concerning the molecule shown below, which one(s) is/are correct?



- a. GTP
- b. ATP
- c. Present in DNA
- d. Form of storage of energy immediately usable by the cell

Exercise :



9. Among these statements, which ones contain ribose and which ones contain deoxyribose?

10. Indicate the 5' and 3' ends of molecule A ?