

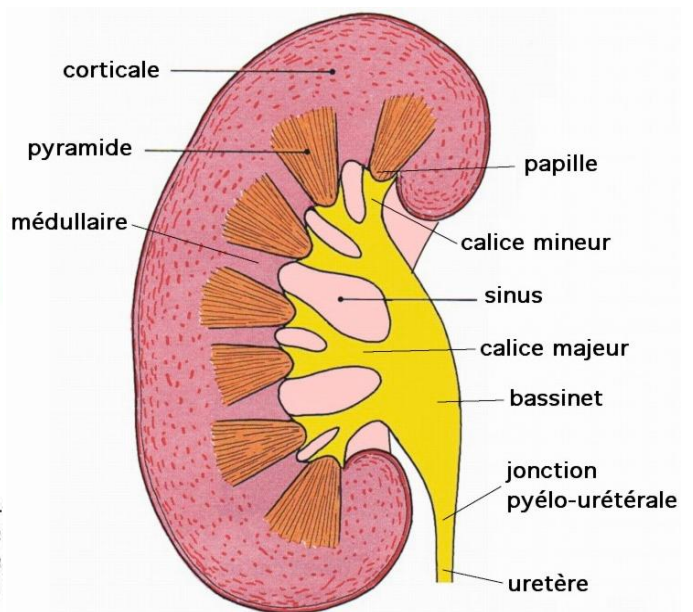
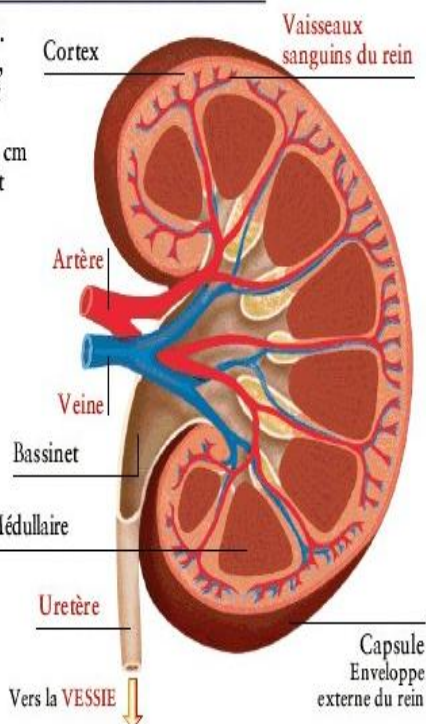
## ANATOMIE DU REIN

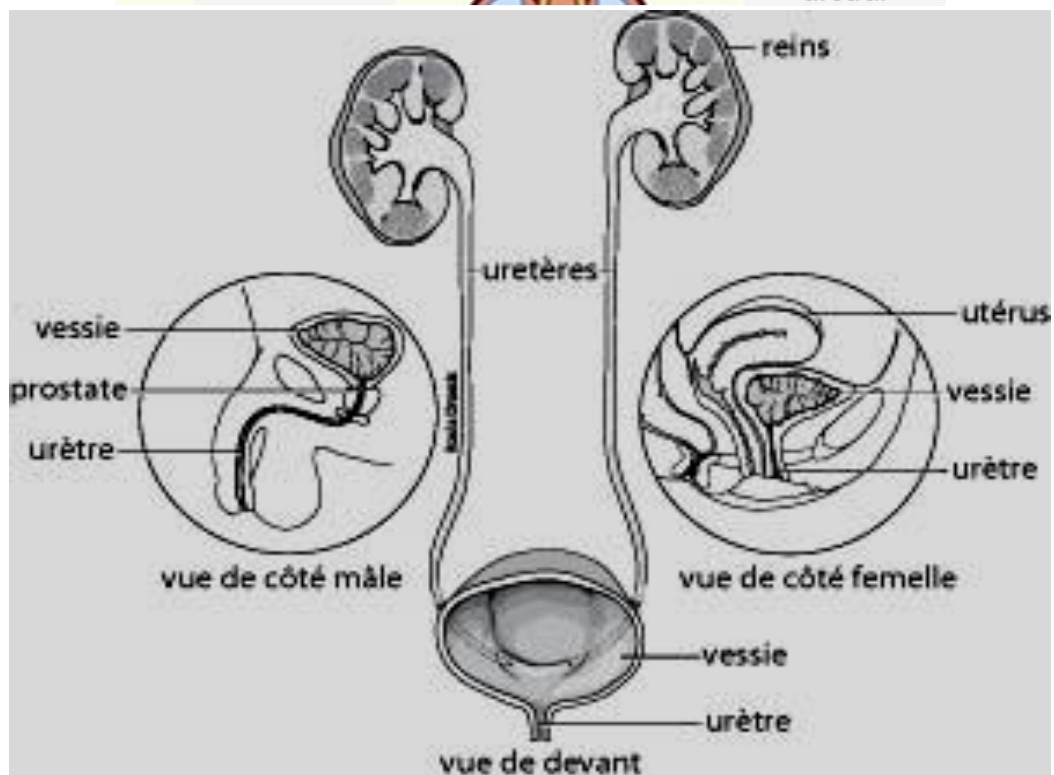
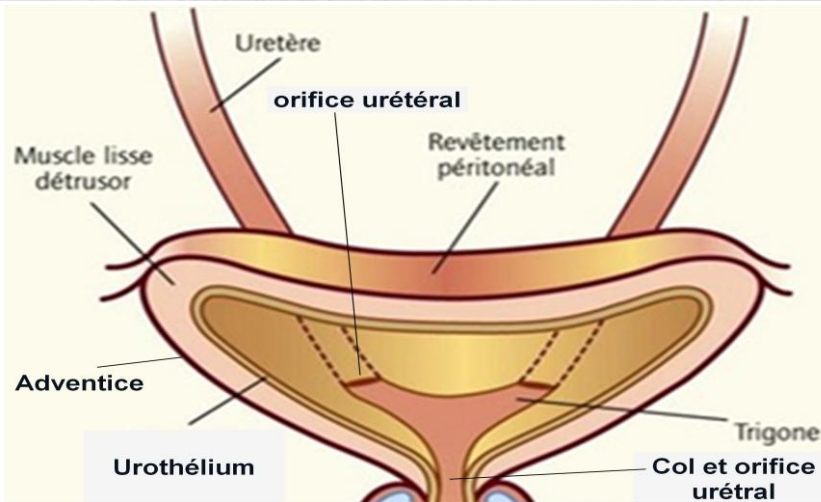
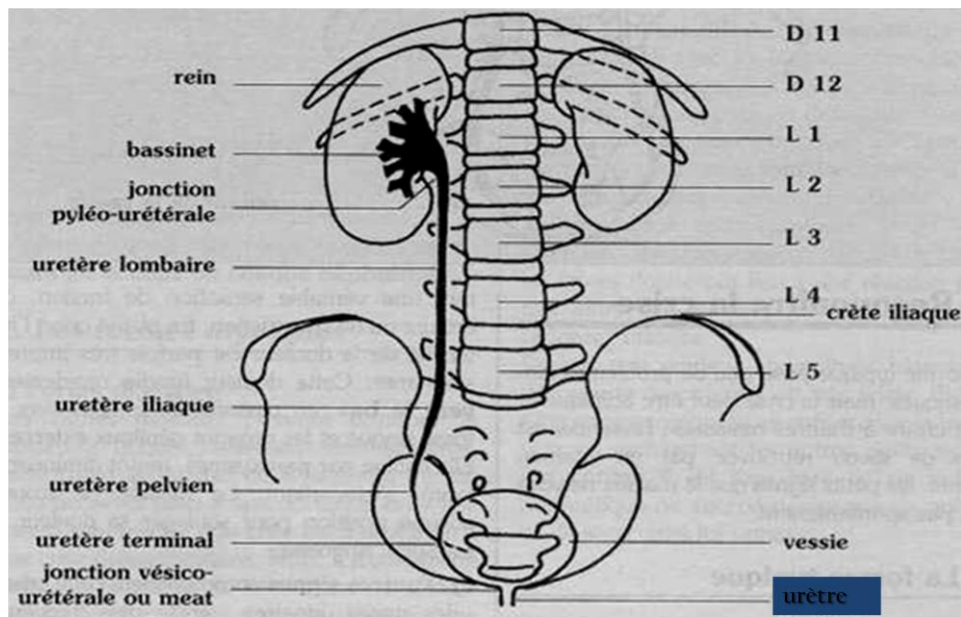
**N**OUS AVONS deux reins. De couleur rouge-brun, ils ont la forme d'un haricot et mesurent environ 10 cm de long, 5cm de large et 2,5 cm d'épaisseur. Ils comprennent trois parties : le cortex, la médullaire et le bassinets.

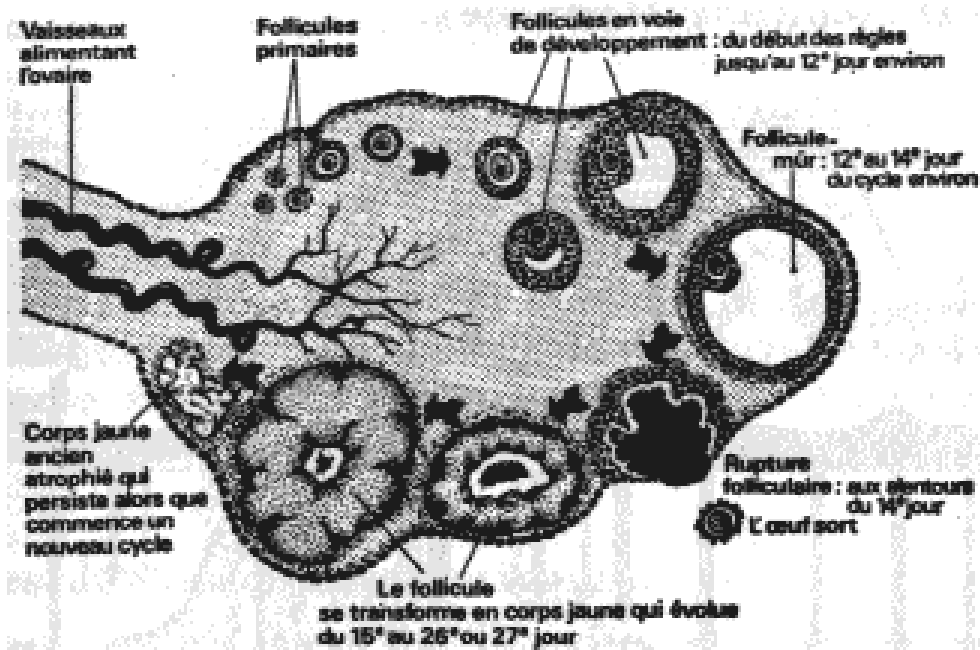
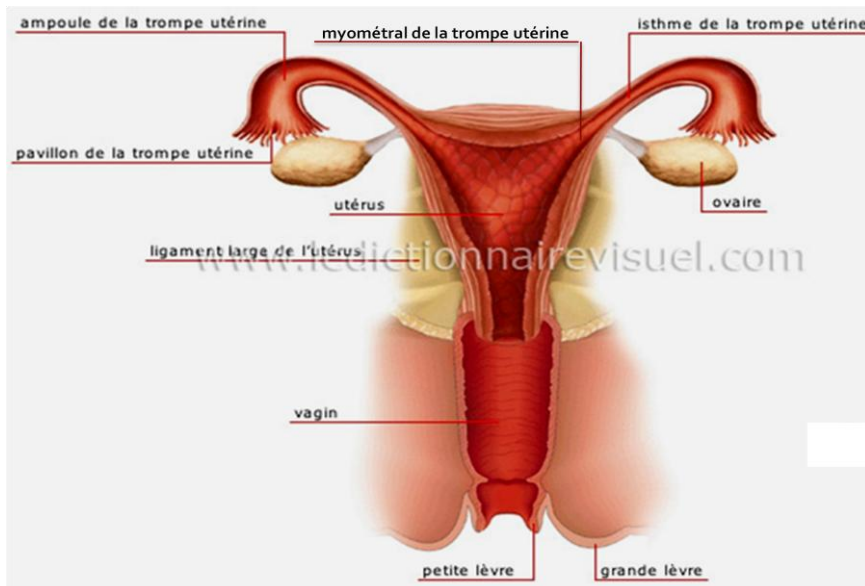
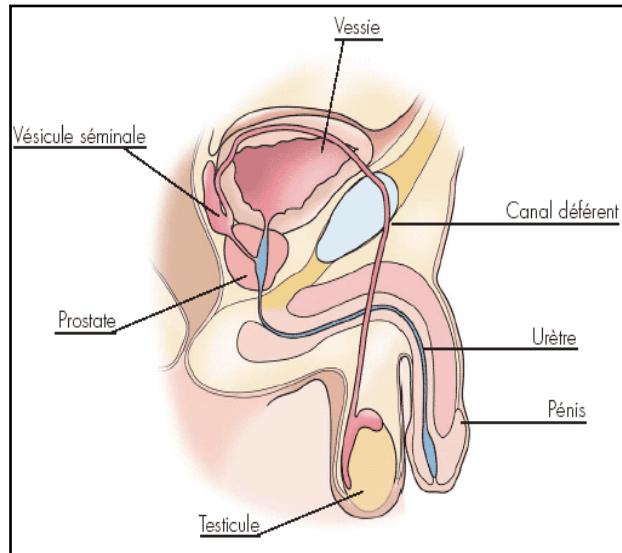
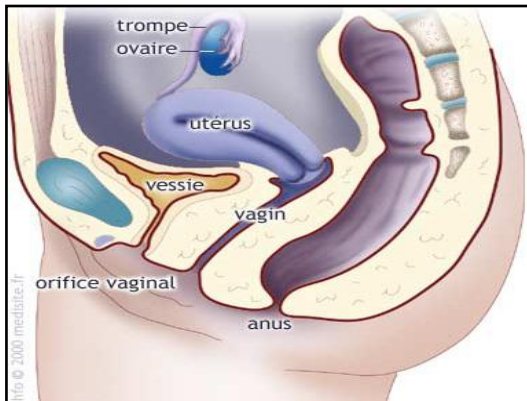
**Cortex**  
Contient des pelotons de vaisseaux filtrant le sang

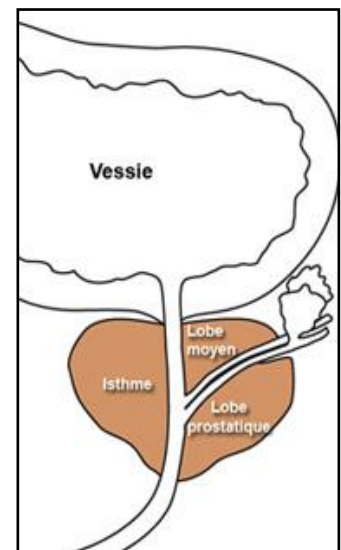
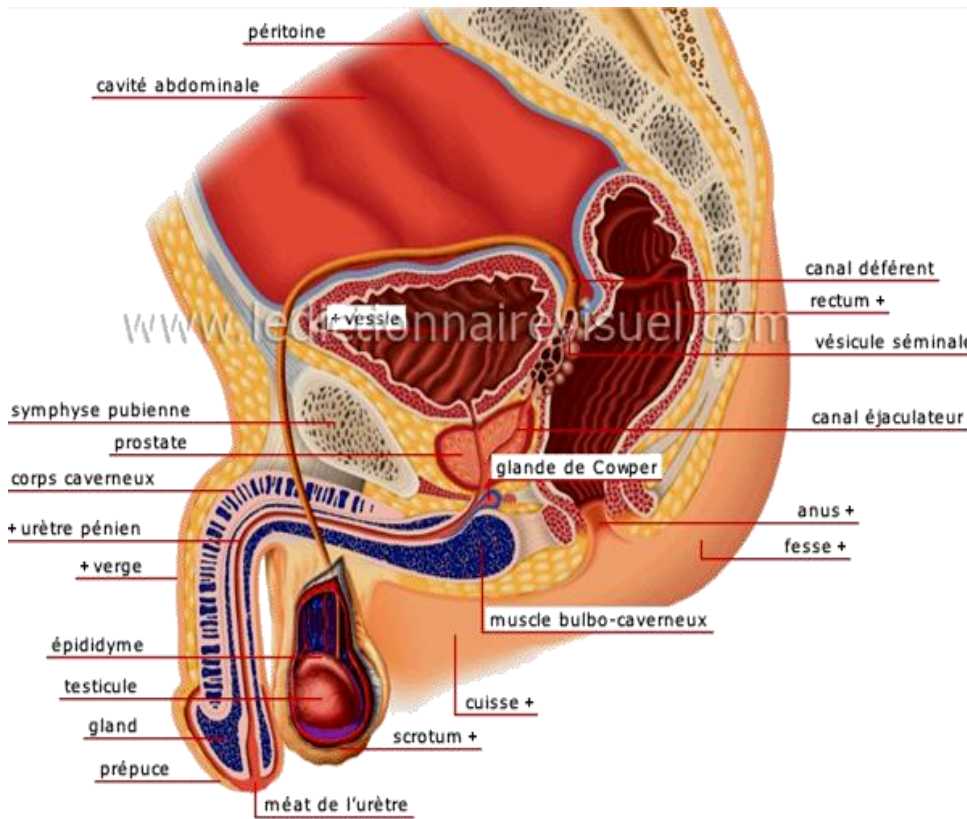
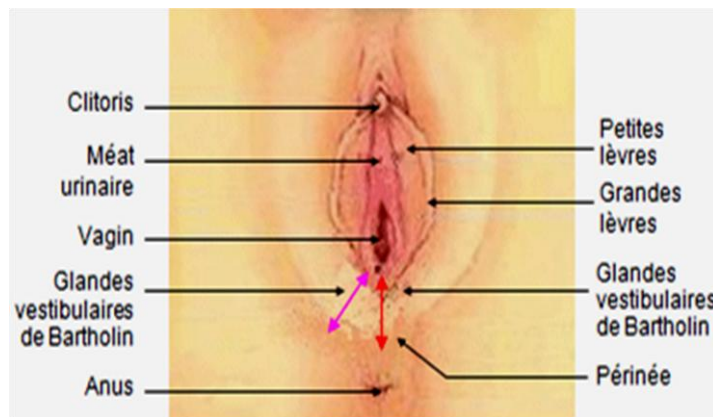
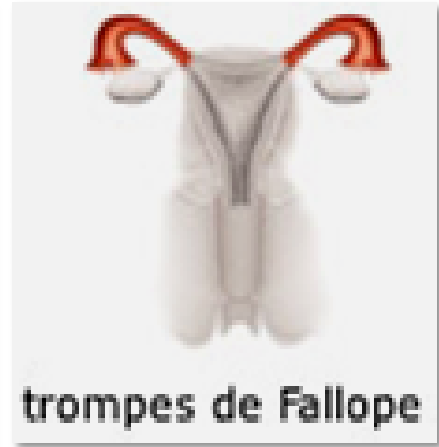
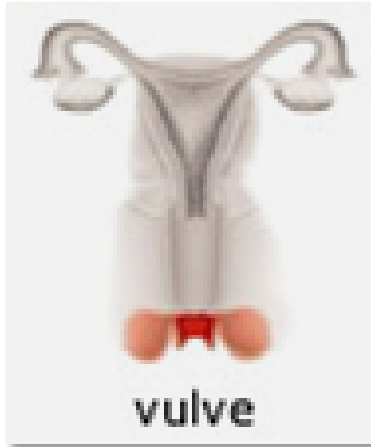
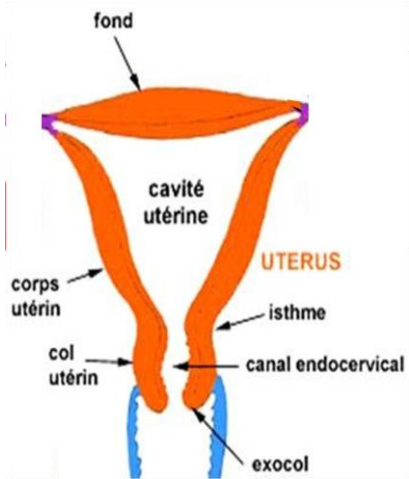
**Médullaire**  
Contient des millions de petits tubes produisant l'urine

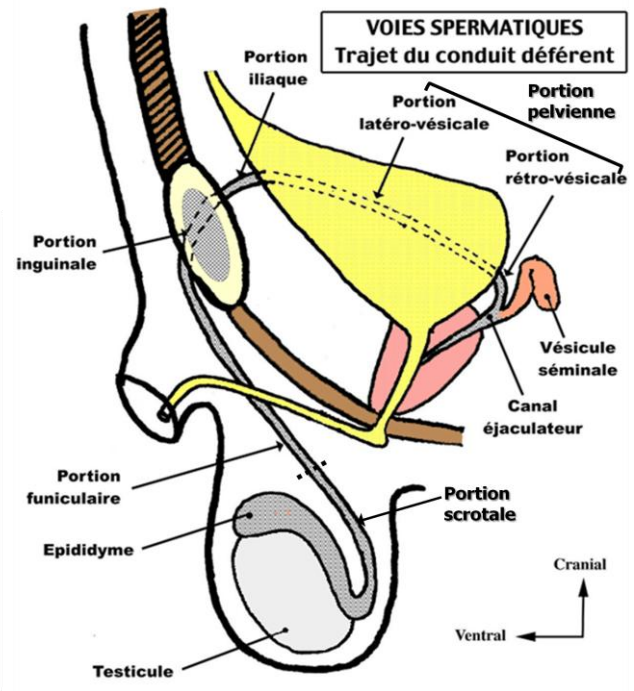
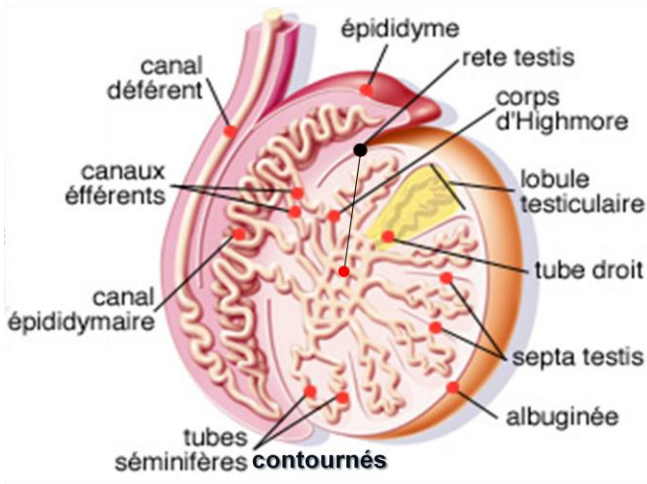
**Bassinets**  
En forme de tunnel, il récupère et canalise l'urine











voies génito-urinaires masculines

